

## High Productivity Cooking Electric Tilting Braising Pan, 80lt, Freestanding

ITEM # \_\_\_\_\_

MODEL # \_\_\_\_\_

NAME # \_\_\_\_\_

SIS # \_\_\_\_\_

AIA # \_\_\_\_\_



586279 (PFET08EEEE)

Electric tilting Braising Pan  
80lt (s), with compound  
bottom, GuideYou panel,  
freestanding

### Short Form Specification

#### Item No. \_\_\_\_\_

AISI 304 stainless steel construction. Pan in AISI 304 stainless steel; 18mm thick pan bottom (15mm mild steel and 3 mm AISI 316 stainless steel). Insulated and counterbalanced lid. Motorized tilting with variable speed control. Pan can be tilted beyond 90° to completely empty the food. The electric heating elements are mounted under the well. Safety thermostat protects the pan from overheating. A precise, electronic control of pan bottom temperature ensures fast reaction and exact adherence to preselected cooking temperatures between 50° and 250°C. TOUCH control panel. SOFT function. Possibility to store recipes in single or multiphase cooking process, with different temperature settings. Built in temperature sensors for precise control of cooking process. IPX6 water resistant. Configuration: Free-standing or Standing against a wall. Installation options (not included): floor mounted on 100mm high feet or a plinth which can be either steel or masonry construction.

### Main Features

- Easy to clean cooking surface due to large-radius edges and corners.
- Thermoblock heating system for optimal temperature distribution and high temperature stability.
- Pan bottom with two individually adjustable heating zones, each with a temperature sensor.
- IPX6 water resistant.
- Temperature sensors provides efficient temperature control: the power is supplied as and when required to keep the set temperature value without exceeding it.
- Optimum heat distribution in the food provides best cooking results in terms of taste, colour and consistency and in terms of vitamin preserving.
- Motorized, variable pan tilting with "SOFT STOP". Tilting and pouring speeds can be precisely adjusted. Pan can be tilted over 90° to facilitate pouring and cleaning operations.
- Built in temperature sensor to precisely control the cooking process.
- No overshooting of cooking temperatures, fast reaction.
- USB connection to easily update the software, upload/download recipes and download HACCP data.
- Multifunctional cooking appliance used for roasting, pot-roasting, braising, simmering, boiling and steaming.

APPROVAL: \_\_\_\_\_

## Construction

- External panelling and internal frame made of 1.4301 (AISI 304) stainless steel.
- Multipurpose non-stick cooking surface in 18 mm thick compound: 3 mm shot-blasted 1.4404 (AISI 316L) stainless steel surface, seamlessly welded to the mild steel bottom.
- Double-lined insulated lid in 1.4301 (AISI 304) stainless steel mounted on the cross beam of the unit, counterbalanced by a hinge that remains open in all positions.
- 15 mm thick heating layer concealed below the entire pan bottom, to provide high thermal diffusion and heat storage properties.
- Water mixing tap is available as optional accessory to make water filling and pan cleaning easier.
- Heatproof handle with non-slip surface.
- Front-mounted inclined led "TOUCH" control panel with recessed deep drawn casing, features self-explanatory display functions which guide operator throughout the cooking process: simultaneous display of actual and set temperature as well as set cooking time and remaining cooking time; real time clock; "SOFT" control for gentle heating up for delicate food; 9 power simmering levels from gentle to heavy boiling; timer for deferred start; error display for quick troubleshooting.
- Possibility to store recipes in single or multiphase cooking process, with different temperature settings.
- Can be prearranged for energy optimisation or external surveillance systems (optional).
- 98% recyclable by weight; packaging material free of toxic substances.
- Lateral surface of the vessel in DIN 1.4301/AISI 304.

## User Interface & Data Management

- Connectivity ready for real time access to connected appliances from remote and data monitoring (requires optional accessory - contact the Company for more details).

## Sustainability



- High-quality thermal insulation of the pan saves energy and keeps operating ambient temperature low.

## Optional Accessories

• Strainer for dumplings for 100lt boiling pans	PNC 910054	<input type="checkbox"/>
• Scraper for dumpling strainer for boiling and braising pans	PNC 910058	<input type="checkbox"/>
• Stainless steel plinth for tilting units - against wall - factory fitted	PNC 911432	<input type="checkbox"/>
• Stainless steel plinth for tilting units - freestanding - factory fitted	PNC 911462	<input type="checkbox"/>
• Bottom plate with 2 feet, 100mm for tilting units (height 800mm) - factory fitted	PNC 911479	<input type="checkbox"/>
• Small perforated shovel for braising pans (PFEN/PUEN)	PNC 911577	<input type="checkbox"/>
• Small shovel for braising pans (PFEN/PUEN)	PNC 911578	<input type="checkbox"/>
• C-board (length 1400mm) for tilting units - factory fitted	PNC 912186	<input type="checkbox"/>
• Power Socket, CEE16, built-in, 16A/400V, IP67, red-white - factory fitted	PNC 912468	<input type="checkbox"/>
• Power Socket, CEE32, built-in, 32A/400V, IP67, red-white - factory fitted	PNC 912469	<input type="checkbox"/>
• Power Socket, SCHUKO, built-in, 16A/230V, IP68, blue-white - factory fitted	PNC 912470	<input type="checkbox"/>
• Power Socket, TYP23, built-in, 16A/230V, IP55, black - factory fitted	PNC 912471	<input type="checkbox"/>
• Power Socket, TYP25, built-in, 16A/400V, IP55, black - factory fitted	PNC 912472	<input type="checkbox"/>
• Power Socket, SCHUKO, built-in, 16A/230V, IP55, black - factory fitted	PNC 912473	<input type="checkbox"/>
• Power Socket, CEE16, built-in, 16A/230V, IP67, blue-white - factory fitted	PNC 912474	<input type="checkbox"/>
• Power Socket, TYP23, built-in, 16A/230V, IP54, blue - factory fitted	PNC 912475	<input type="checkbox"/>
• Power Socket, SCHUKO, built-in, 16A/230V, IP54, blue - factory fitted	PNC 912476	<input type="checkbox"/>
• Power Socket, TYP25, built-in, 16A/400V, IP54, red-white - factory fitted	PNC 912477	<input type="checkbox"/>
• Panelling for plinth recess (depth from 70 to 270mm) for tilting units - factory fitted (Deutschland, Austria, Switzerland) - factory fitted	PNC 912479	<input type="checkbox"/>
• Connecting rail kit for appliances with backsplash, 800mm	PNC 912497	<input type="checkbox"/>
• Connecting rail kit, 800mm	PNC 912500	<input type="checkbox"/>
• Automatic water filling (hot and cold) for tilting units - to be ordered with water mixer - factory fitted	PNC 912735	<input type="checkbox"/>
• Kit energy optimization and potential free contact - factory fitted	PNC 912737	<input type="checkbox"/>
• Mainswitch 60A, 6mm <sup>2</sup> - factory fitted	PNC 912740	<input type="checkbox"/>

- Rear closing kit for tilting units - against wall - factory fitted PNC 912752 ☐
- Rear closing kit for tilting units - island type - factory fitted PNC 912758 ☐
- Lower rear backpanel for tilting units with or without backsplash - factory fitted PNC 912770 ☐
- Spray gun for tilting units - freestanding (height 800mm) - factory fitted PNC 912777 ☐
- Emergency stop button - factory fitted PNC 912784 ☐
- Connecting rail kit: modular 80 (on the left) to ProThermetic tilting (on the right), ProThermetic stationary (on the left) to ProThermetic (on the right) PNC 912971 ☐
- Connecting rail kit: modular 80 (on the right) to ProThermetic tilting (on the left), ProThermetic stationary (on the right) to ProThermetic (on the left) PNC 912972 ☐
- Connecting rail kit for appliances with backsplash: modular 80 (on the left), ProThermetic tilting (on the right), ProThermetic stationary (on the left) to ProThermetic tilting (on the right) PNC 912977 ☐
- Connecting rail kit for appliances with backsplash: modular 80 (on the right), ProThermetic tilting (on the left), ProThermetic stationary (on the right) to ProThermetic tilting (on the left) PNC 912978 ☐
- Scraper without handle for braising pans (PFEX/PUEX) PNC 913431 ☐
- Scraper with vertical handle for braising pans (PFEX/PUEX) PNC 913432 ☐
- Mixing tap with drip stop, two knobs, 815mm height, 600mm swivelling depth for PBOT/PFET - factory fitted PNC 913554 ☐
- Mixing tap with drip stop, two knobs, 815mm height, 450mm swivelling depth for PBOT/PFET - factory fitted PNC 913555 ☐
- Mixing tap with drip stop, two knobs, 685mm height, 600mm swivelling depth for PBOT/PFET - factory fitted PNC 913556 ☐
- Mixing tap with drip stop, two knobs, 685mm height, 450mm swivelling depth for PBOT/PFET - factory fitted PNC 913557 ☐
- Mixing tap with two knobs, 520mm height, 600mm swivelling depth for PXXT- KWC - factory fitted PNC 913567 ☐
- Mixing tap with one lever, 564mm height, 450mm swivelling depth for PXXT- KWC - factory fitted PNC 913568 ☐

- Connectivity kit for ProThermetic Boiling and Braising Pans ECAP - factory fitted PNC 913577 ☐

## Recommended Detergents

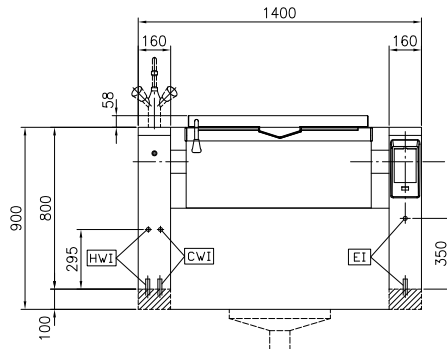
- C41 HI-TEMP RAPID DEGREASER, 1 pack of six 1 lt. bottles (trigger incl.) PNC 0S2292 ☐



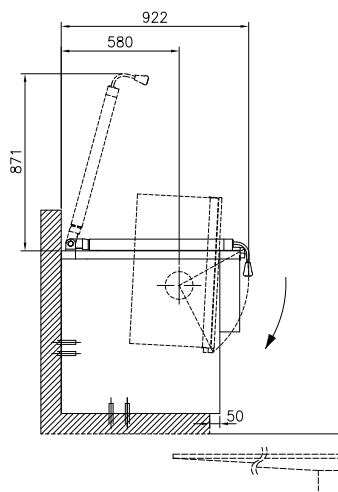
**Electrolux**  
PROFESSIONAL

## High Productivity Cooking Electric Tilting Braising Pan, 80lt, Freestanding

Front

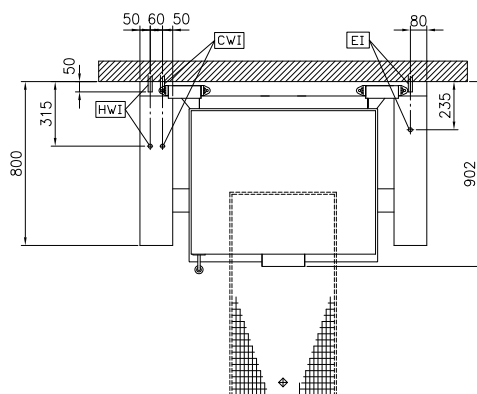


Side



CWI = Cold Water inlet 1 (cleaning)  
EI = Electrical inlet (power)  
HWI = Hot water inlet

Top



### Electric

Supply voltage: 400 V/3N ph/50/60 Hz  
Total Watts: 20.6 kW

### Installation:

Type of installation: On Base

### Key Information:

Working Temperature MIN: 50 °C  
Working Temperature MAX: 250 °C  
Vessel (rectangle) width: 820 mm  
Vessel (rectangle) height: 200 mm  
Vessel (rectangle) depth: 638 mm  
External dimensions, Width: 1400 mm  
External dimensions, Depth: 800 mm  
External dimensions, Height: 800 mm  
Net weight: 240 kg  
Configuration: Rectangular; Tilting  
Net vessel useful capacity: 58 lt  
Tilting mechanism: Automatic  
Double jacketed lid: ✓  
Heating type: Direct



High Productivity Cooking  
Electric Tilting Braising Pan, 80lt, Freestanding

The company reserves the right to make modifications to the products without prior notice. All information correct at time of printing.

2025.12.08